

Panel CARLOS

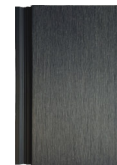


teak

cedar

silver
gray

walnut

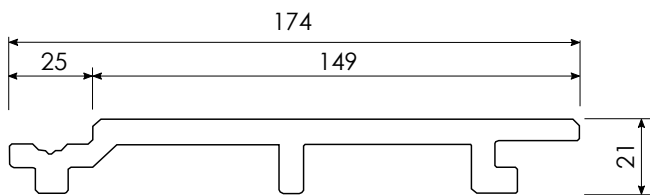


PA5919

PA5920

PA5921

PA5922



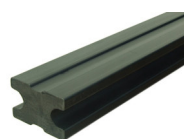
Usable surface per board	0,432 m ²
Mass per unit area	11,8 kg/m ²
Outer width	174 mm
Usable width	149 mm
Standard lenght	2 900 mm



panel corner universal
41 x 53 mm x 2,90 m

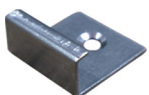
item PA5933 | Teak
item PA5934 | Walnut

item PA5935 | Cedar
item PA5936 | Silver Gray



panel underlay WPC black
40 x 25 mm x 2,90 m

item PA5932 | Black

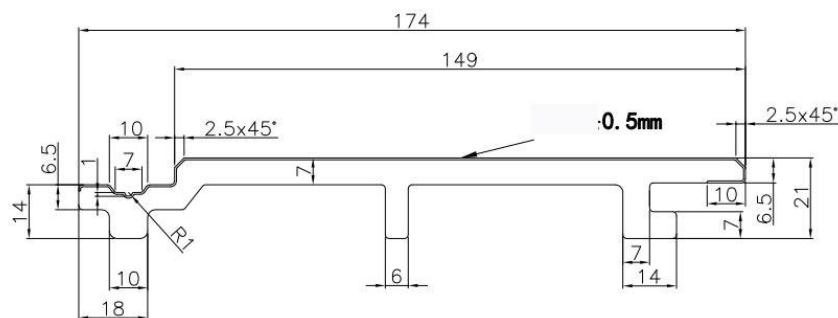


starting clip
24 x 28 x 4 mm

Product description:

Nominal values	
Type of product	Wood-plastic composite (WPC) cladding. The core of the wood-plastic composite consists of 60% wood and 40% high-density polyethylene (HDPE) fillers + additives. The core is covered with a coextruded plastic cap layer. The profile has got a tongue- and groove connection.
Manufacturer	GAUDIAHOME, s.r.o
Ratio wood/ HDPE	35 % Plastic, 60 % Wood fiber, 5 % Additives
Item No.	PA5919, PA5920, PA5921, PA5922
Item Name	PANEL CARLOS TEAK, PANEL CARLOS CEDAR, PANEL CARLOS SILVER GRAY, PANEL CARLOS WALNUT
Profiling/ shape	The technical drawing is visible in Figure 1
Profile width (mm)	174
Total thickness (mm)	21
<i>Thickness core</i>	6 - 7
<i>Thickness coextruded layer (cap)</i>	0.5
Density(g/m ³)	1.35
Color	Teak, Cedar Silver Gray, Walnut
Surface structure	
Lenght (mm)	2 900

Figure 1: Profile of the material



Test	Standard / Method	Value	Verdit
Physical Properties			
Moisture Content	EN15534 EN322	0.85%	
Mechanical Properties			
Falling Mass Impact Resistance	EN15534	Max Crack length(mm): No crack. Max Residual Indentation(mm): 0.13	Pass
Brinell Hardness	EN15534	83Mpa	
Resistance to Indentation	EN15534	Rate of elastic recovery: 73%	
Bond Strength	EN319	Average Bond Strength>1.78MPa No obvious abruption and damage after test	
Thermal Properties			
Coefficient of Linear Thermal Expansion	EN15534	$41.6 \times 10^{-6} K^{-1}$	$\leq 50 \times 10^{-6} K^{-1}$ Pass
Heat Build-up	EN15534	$\Delta T = -2.9^{\circ}C$	
Durability			
Resistance to Artificial Weathering	EN15534	No blistering, cracking or peeling observed	
Swelling and Water Absorption (28days immersion)	EN15534	Swelling: 0.89% in thickness, 0.07% in width, 0.07% in length.	Swelling $\leq 4\%$ in thickness $\leq 0.8\%$ in width $\leq 0.4\%$ in length Pass
		Water absorption: Max $\leq 1.09\%$	Water absorption: Max $\leq 9\%$ Pass
Resistance to Boiling Water	EN15534	Mean: 0.95%	Mean $\leq 7\%$ Pass
		Max : 1%	Max. $\leq 9\%$ Pass
Mould Resistance	EN15534	Rating 0, no growth	
Fire			
Euroclass	EN13501	C	
Safety & Environment Protection			
Heavy Metal Content	EPA3051	Sb:ND, As:ND, Se:ND, Sn:ND	
Lead Content Test	EUNo.628/2015	Non Detected	
Pb, Cd, Hg, Cr6+	RoHS- IEC62321	Pb:ND, Cd:ND, Hg:ND, Cr6+:ND	